

COMPARTO VILLANOVA

ANS C2.4

PROPRIETA'


PROGETTO

LOTTE
SF 13 - SF 14

ABACO TIPOLOGICO

piante
prospetti
sezioni

1:200



A

B

C

D

E

F

G

H

I

L

M

N

O

P

Q

R

S

T

U

V

Z

1

2

3

4

5

6

7

8

9

10

11

12

13

14

15

16

17

18

19

20

21

a

b

c

d

e

f

g

h

i

l

m

n

o

p

q

r




s

t

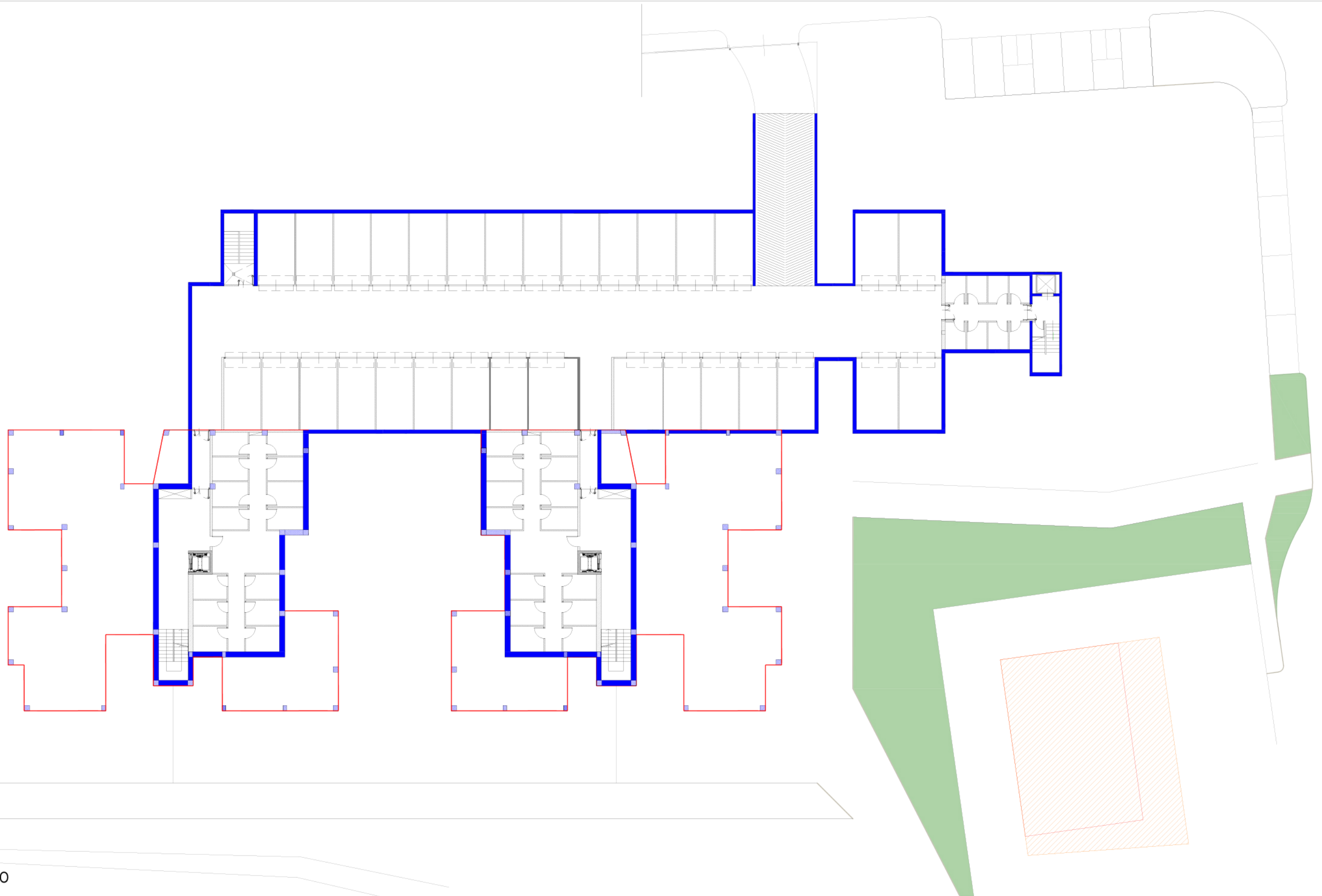
u

v

z

| TECNICI | | |
|--|--|--|
|  | STUDIO GBA Arch. Gianluca Brini Arch. Luca Pedrazzi | |
|  | STUDIO GIOVANNINI Ing. Gian Franco Giovannini Ing. Roberto Tranquilli | |
|  | STUDIO TEAM WORK S.C.A.R.L. Arch. Ing. Nicola Zanni Arch. Stefania Piancone | |
| | | |
| | | |
| | | |
| | | |
| | | |





PIANO INTERRATO



PROGETTISTI: Arch. Ing. Nicola Zanni
Arch. Stefania Piancone

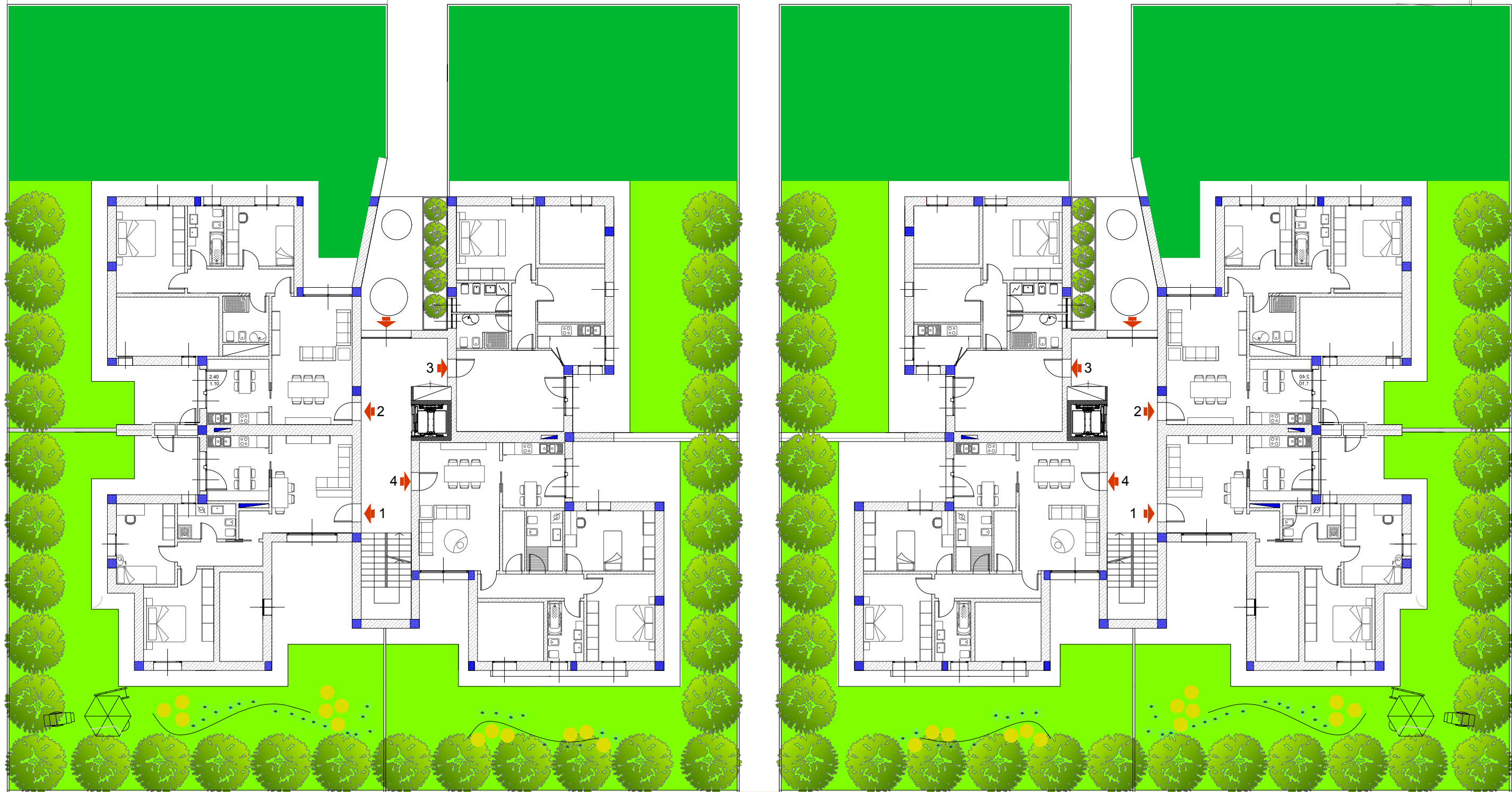
COLLABORATORI : Michele Zanni

LOTTE SF 13 - SF 14

| | |
|---------------------|------------|
| DATA CREAZIONE: | 2017-05-15 |
| DATA VERIFICA: | |
| DATA AGGIORNAMENTO: | |

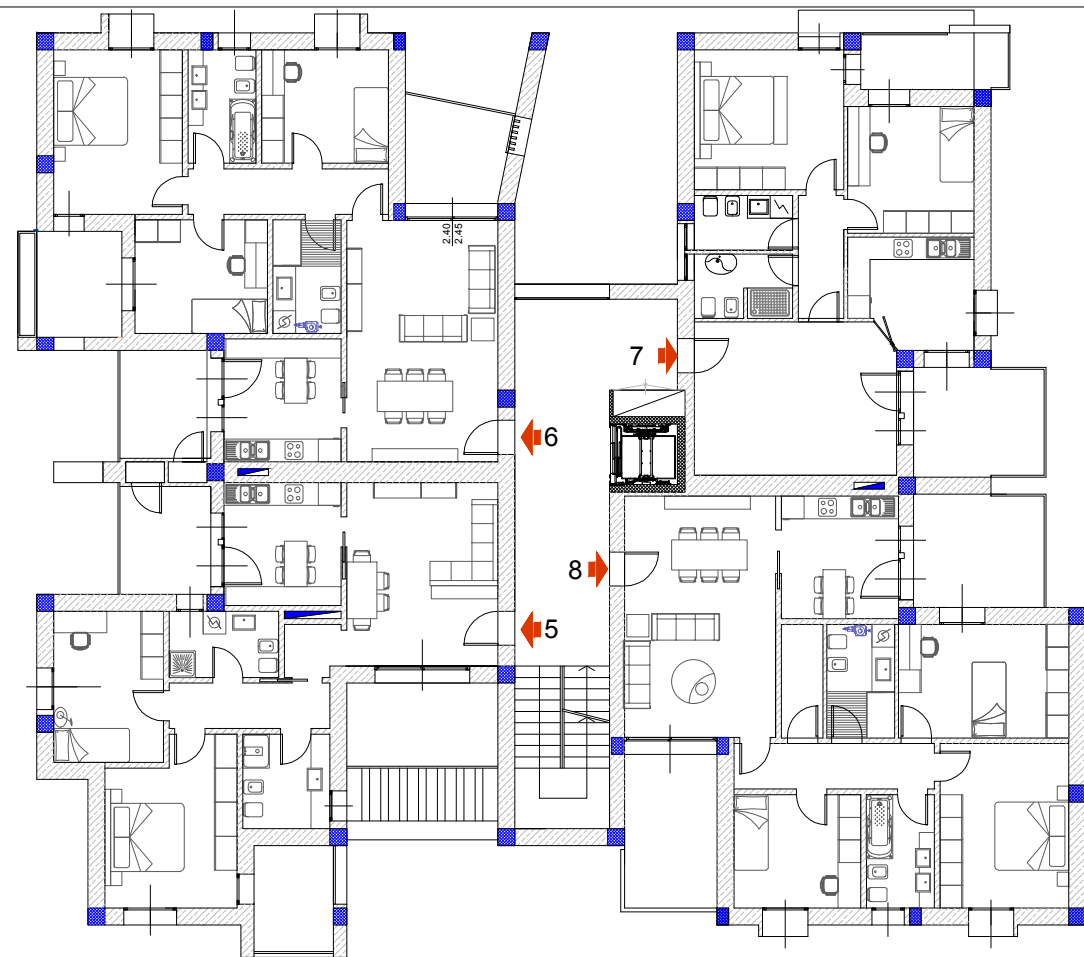
| | |
|--------------|---------------|
| ELABORATO: | PLANIMETRIE |
| SCALA: | 1:300 |
| DESCRIZIONE: | ELABORATI PUA |

F.1.b

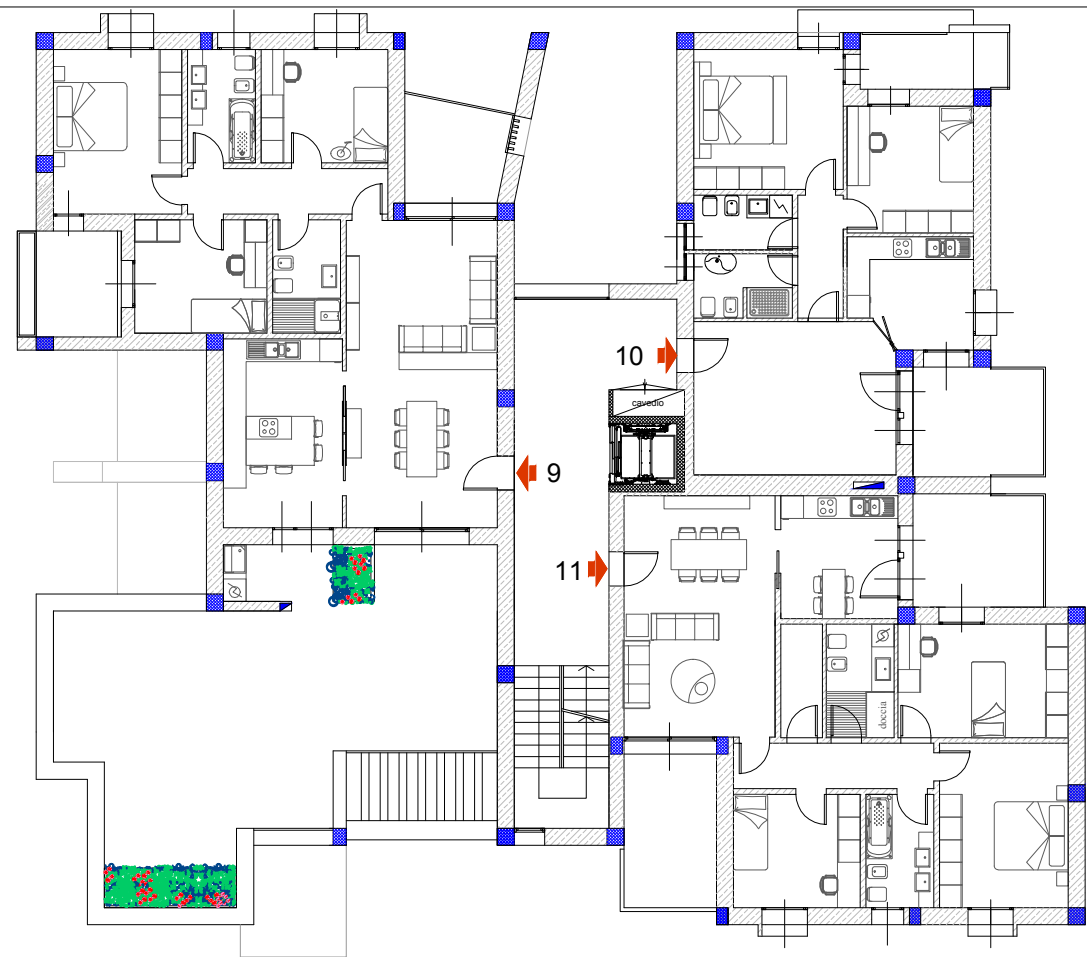


PIANO TERRA

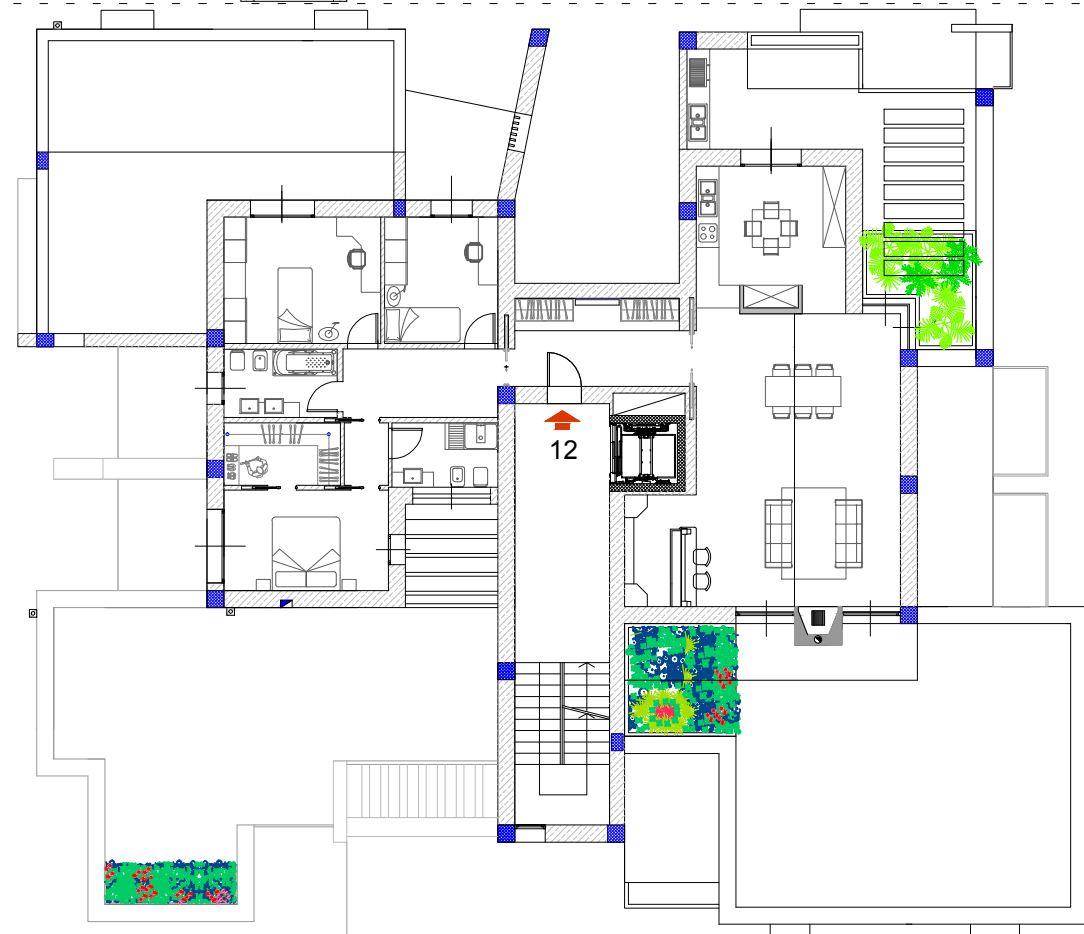
| | | | | | | |
|--|-------------------------------|---------------------|------------|--------------|---------------|-------|
| <div><div>TEAMWORK</div><div>studio di architettura e ingegneria</div><div>via Aldo Moro 18 - 51123 Poggia</div><div>cap. 51044 - P. Iva 02568150779</div></div> | | LOTTO SF 13 | | | | |
| PROGETTISTI: Arch. Ing. Nicola Zanni Arch. Stefania Piancone | COLLABORATORI : Michele Zanni | DATA CREAZIONE: | 2017-05-15 | ELABORATO: | PLANIMETRIE | F.1.c |
| | | DATA VERIFICA: | | SCALA: | 1:200 | |
| | | DATA AGGIORNAMENTO: | | DESCRIZIONE: | ELABORATI PUA | |



PIANO PRIMO



PIANO SECONDO



PIANO TERZO



PIANO COPERTURA



STUDIO TECNICO

PROGETTISTI: Arch. Ing. Nicola Zanni
Arch. Stefania Piancone

COLLABORATORI : Michele Zanni

LOTTO SF 13

| | |
|---------------------|------------|
| DATA CREAZIONE: | 2017-05-15 |
| DATA VERIFICA: | |
| DATA AGGIORNAMENTO: | |

| | |
|--------------|---------------|
| ELABORATO: | PLANIMETRIE |
| SCALA: | 1:200 |
| DESCRIZIONE: | ELABORATI PUA |

F.1.d



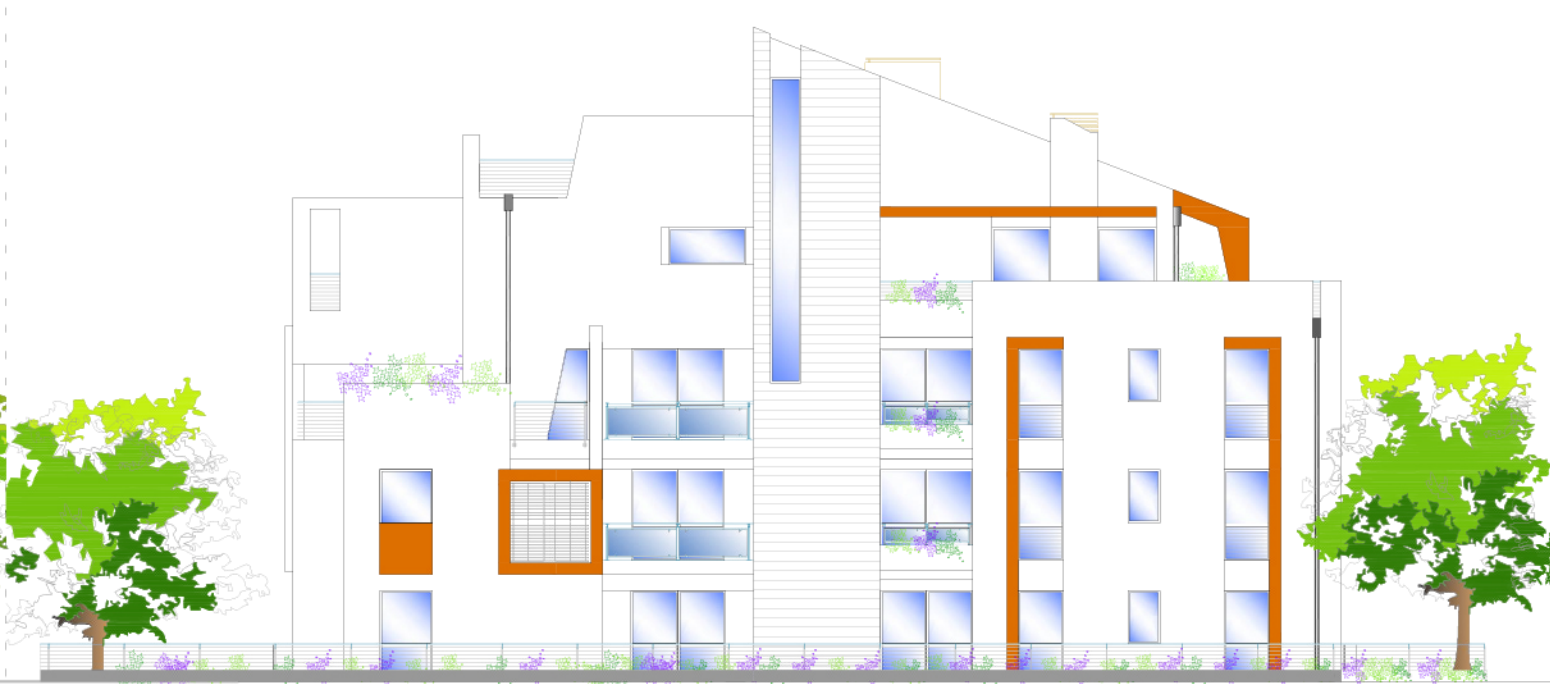
PROSPETTO NORD - OVEST



PROSPETTO NORD - EST



PROSPETTO SUD - EST



PROSPETTO SUD - OVEST



PROGETTISTI: Arch. Ing. Nicola Zanni
Arch. Stefania Piancone

COLLABORATORI : Michele Zanni

LOTTO SF 13

| | | | |
|---------------------|------------|--------------|---------------|
| DATA CREAZIONE: | 2017-05-15 | ELABORATO: | PROSPETTI |
| DATA VERIFICA: | | SCALA: | 1:200 |
| DATA AGGIORNAMENTO: | | DESCRIZIONE: | ELABORATI PUA |

F.1.e